



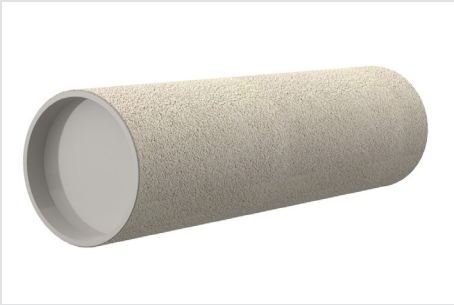
PZVR

Pictured: PZVR installed in formwork

Wall Sleeve Cement-Coated Wall Sleeve

BENEFITS AND FEATURES

- **WATERTIGHT** bond to poured concrete with proprietary cement coating – no puddle flange or engineered ridges needed
- **REDUCES LABOR** with its lightweight UPVC design. No additional workers or equipment required to move any length PZVR wall sleeve
- **CUSTOMIZABLE LENGTH** when ordered or cut onsite
- **SIMPLE INSTALLATION** by securing endcap to formwork
- **CLEAN AND DEBRIS-FREE** interior is ensured with two PE endcaps
- **DURABLE** will never rust or corrode



PE covers protect UPVC inside from debris



Close up of special cement-bound coating



Suitable for all wall thicknesses

Harden From Water Ingress

Polywater | Hauff-Technik® PZVR can be simply installed in wood or steel formwork. Its proprietary coating creates a homogeneous bond with poured concrete. This eliminates any space through which water can travel.

SPECIFICATIONS AND APPLICATIONS:

- **Watertightness Testing:** Passed testing at 72 psi (5 bar) for 72 hours without water leakage. See test report in <https://polywater-haufftechnik.com/resources/technical-resources/>
- **Temperature Storage Range:** PZVR storage range is: 40° F to 85° F (5° C to 30° C).

| Catalog No. | Product Description | Unit |
|---------------|-----------------------------------|------|
| PZVR - 2/xxx | 2" (50 mm) diameter wall sleeve | each |
| PZVR - 3/xxx | 3" (80 mm) diameter wall sleeve | each |
| PZVR - 4/xxx | 4" (100 mm) diameter wall sleeve | each |
| PZVR - 5/xxx | 5" (125 mm) diameter wall sleeve | each |
| PZVR - 6/xxx | 6" (150 mm) diameter wall sleeve | each |
| PZVR - 8/xxx | 8" (200 mm) diameter wall sleeve | each |
| PZVR - 10/xxx | 10" (250 mm) diameter wall sleeve | each |
| PZVR - 12/xxx | 12" (300 mm) diameter wall sleeve | each |

XXX indicates length to be specified to the nearest inch (2.5 cm) increment

IMPORTANT NOTICE: The statements here are made in good faith based on tests and observations we believe to be reliable. However, the completeness and accuracy of the information is not guaranteed. Before using, the end-user should conduct whatever evaluations are necessary to determine that the product is suitable for the intended use.

American Polywater expressly disclaims any implied warranties and conditions of merchantability and fitness for a particular purpose. American Polywater's only obligation shall be to replace such quantity of the product proven to be defective. Except for the replacement remedy, American Polywater shall not be liable for any loss, injury, or direct, indirect, or consequential damages resulting from product's use, regardless of the legal theory asserted.

CONTACT US

1-800-328-9384 Toll Free
 1-651-430-2270 Main
 1-651-430-3634 Fax

email:
support@polywater.com

American Polywater Corporation
 11222 60th Street N
 Stillwater, MN 55082 USA

