

PHSI 150 Varia

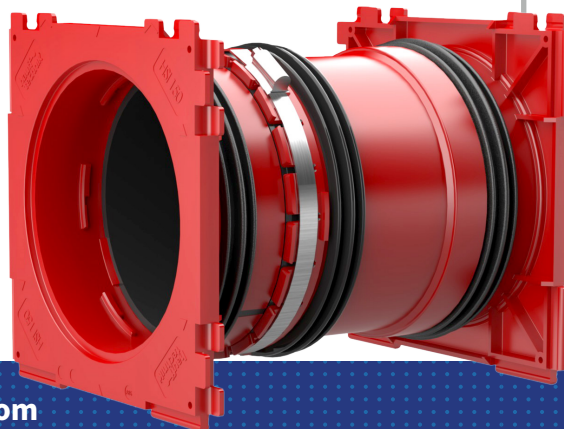


DOUBLE WALL INSERT, ADJUSTABLE LENGTH FOR SETTING IN CONCRETE



Create Intelligent Pathways into Buildings, Right from the Start

Creating a better pathway into buildings begins with the Varia. Pour-in-place conduits, sleeves, or core drilling leave room for error and are labor intensive to install. Planning ahead with the PHSI 150 Varia allows for the design of structures that include the types of utility pipes, conduits, or cables needed now, while providing multiple watertight entrances for the future.



FEATURES AND BENEFITS

- **ADJUSTABLE**
Infinitely moveable to the required wall thickness on site
- **CONVENIENT**
Push-fit socket frame system for block assembly on site
- **TWO-WAY**
Connections of system sealing possible on both sides
- **SMART DESIGN**
Easily insert various system covers for sealing cables and connecting smooth and corrugated conduits
- **OPTIONS AVAILABLE**
For double walls/element walls
- **WATERPROOF**
Concrete Stress Class 1, Stress Class 2

Polywater | Hauff-Technik—PHSI 150 Varia Wall Insert

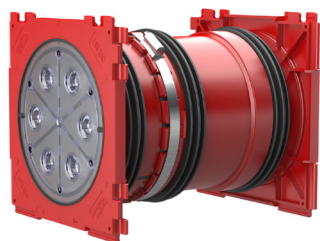


A hex key is included to adjust the PHSI 150 Varia to accommodate various wall thicknesses.

ITEM	SUITABLE FOR WALL THICKNESS INCH (mm)	CATALOG #
Double Wall Insert	7.874 – 10.236 (200 – 260 mm)	PHSI-150-K2-VARIA260
	10.236 – 14.370 (260 – 365 mm)	PHSI-150-K2-VARIA365
Double Wall Insert	14.370 – 18.504 (365 – 470 mm)	PHSI-150-K2-VARIA470
	18.504 – 22.638 (470 – 575 mm)	PHSI-150-K2-VARIA575

For wall thickness less than 8 inches (203 mm), PHSI 150 Single Wall Inserts are available. Contact support@polywater.com for more information

PRODUCT EXAMPLE



PRODUCT INSTALLATION



We recommend the use of PHSI-AH-40 spacers with the PHSI 150 wall inserts when installing 4" to 6" conduits.



Matching accessories, such as spacers to enlarge axial spacing to 9.843 inches (250 mm), are found on the Accessories page.



PHSI-AH-40

Contact us for additional building entry solutions.

polywater-haufftechnik.com | polywater.com

IMPORTANT NOTICE: The statements here are made in good faith based on tests and observations we believe to be reliable. However, the completeness and accuracy of the information is not guaranteed. Before using, the end-user should conduct whatever evaluations are necessary to determine that the product is suitable for the intended use.

American Polywater expressly disclaims any implied warranties and conditions of merchantability and fitness for a particular purpose. American Polywater's only obligation shall be to replace such quantity of the product proven to be defective. Except for the replacement remedy, American Polywater shall not be liable for any loss, injury, or direct, indirect, or consequential damages resulting from a product's use, regardless of the legal theory asserted.

© 2021 American Polywater Corporation (08/21) LIT-PHSIFLYER/REV000

Polywater
Solutions at work.

American Polywater Corporation
11222 60th Street N.
Stillwater, MN 55082 USA

+1 651-430-2270
+1 800-328-9384 Toll Free
+1 651-430-3634 Fax
email: support@polywater.com