



Wall Sleeve and Mechanical Seal System

PZVR

Wall Sleeve with proprietary coating



FEATURES AND TECHNICAL DATA

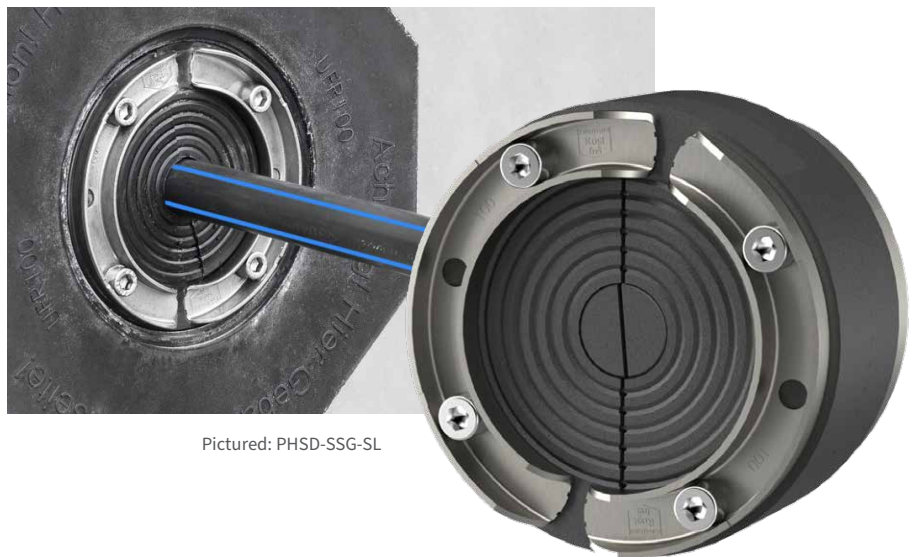
- **WATERTIGHT**
Bonds to poured concrete with proprietary cement coating – no puddle flange or engineered ridges needed
- **REDUCES LABOR**
Designed with lightweight UPVC
- **CUSTOMIZABLE LENGTH**
When ordered or cut on-site
- **CLEAN AND DEBRIS-FREE**
Interior is protected with two PE end-caps
- **DURABLE**
Will not rust or corrode

FEATURES AND TECHNICAL DATA

- **ADJUSTABLE**
Super segmented ring technology allows individual adjustments to the pipe/cable diameter on site
- **MAINTAIN ACCURACY**
Segments imprinted with exact diameter indication and predefined breaking point
- **SINGLE SOLUTION**
Ideal for single pipes or cables of varying sizes. Adjusts to accommodate a range of single cable or pipe OD's with one seal
- **RELIABLE**
Gastight and watertight to 36 psi
- **OPTIONS**
Available in 1.575" (40 mm) width EPDM or NBR rubber

PHSD SSG SL

Standard Mechanical Seals with super segmented ring technology



Pictured: PHSD-SSG-SL



WALL SLEEVE and STANDARD MECHANICAL SEAL SYSTEM

PGKD

Modular Seal with visual installation indicator



PGKD 400 with one segment not tightened – installation error immediately detected



PGKD 400 – tightening of segments

FEATURES AND TECHNICAL DATA

- **VISUAL INSTALLATION INDICATOR**
Integrated, visual installation control - no tongue wrench required
- **NO RE-TIGHTENING REQUIRED**
Seal remains secure after installation
- **GASTIGHT AND WATERTIGHT**
Up to 72 psi (5 bar)
- **NO LOOSE PARTS**
Nuts molded into the pressure plates
- **DURABLE**
All metal parts made of high-quality stainless steel V4A (AISI 316L)

When combined with PGKD or PHSD, PZVR offers unmatched sealing performance around and inside sleeves in walls, floors, ceilings and structural supports. It provides an engineered system for watertight penetrations in a structure. PZVR sleeves are formed from lightweight PVC and are easily installed in wood or steel formwork. Its proprietary coating creates a homogeneous bond with poured concrete, eliminating any space through which water can travel. PZVR is watertight to 72 psi. If engineering changes are made, sleeves can be cut shorter with ordinary hand tools at the job site.

polywater.com | +1 651-430-2270

IMPORTANT NOTICE: The statements here are made in good faith based on tests and observations we believe to be reliable. However, the completeness and accuracy of the information is not guaranteed. Before using, the end-user should conduct whatever evaluations are necessary to determine that the product is suitable for the intended use.

American Polywater expressly disclaims any implied warranties and conditions of merchantability and fitness for a particular purpose. American Polywater's only obligation shall be to replace such quantity of the product proven to be defective. Except for the replacement remedy, American Polywater shall not be liable for any loss, injury, or direct, indirect, or consequential damages resulting from a product's use, regardless of the legal theory asserted.

© 2022 American Polywater Corporation (04/22) LIT-SLEEVE SYSTEM/REV000

Polywater[®]
Solutions at work.

American Polywater Corporation
11222 60th Street N.
Stillwater, MN 55082 USA

+1 800-328-9384 Toll Free
+1 651-430-3634 Fax
email: support@polywater.com